

U.S. Army Public Health Center

# Army Influenza Activity Report

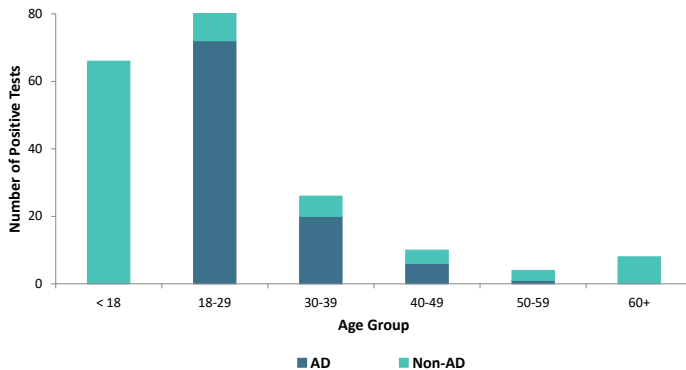
Week ending 02 April 2022 (Week 13)

## SUMMARY

Influenza activity remained constant in the Army population during surveillance week 13. Two hundred and ninety-two positive influenza A and nine influenza B specimens were reported during surveillance week 13. Two influenza-associated hospitalizations were reported in week 13; the season total thus far is sixteen compared to four influenza-associated hospitalizations reported as of this time last season. Of the specimens that tested positive for select respiratory illnesses, among non-AD beneficiaries, 66.7% were collected from individuals younger than 18 during surveillance week 13. Among AD service members, 72.7% of positive specimens were collected from individuals 18-29 years of age. Nationwide, influenza activity is increasing in most areas of the country with 8.3% of specimens tested by clinical laboratories being positive for influenza A or B.

## DEMOGRAPHICS

Positive Respiratory Specimen Results from Army MTFs by Age Group and Beneficiary Status, Week 13



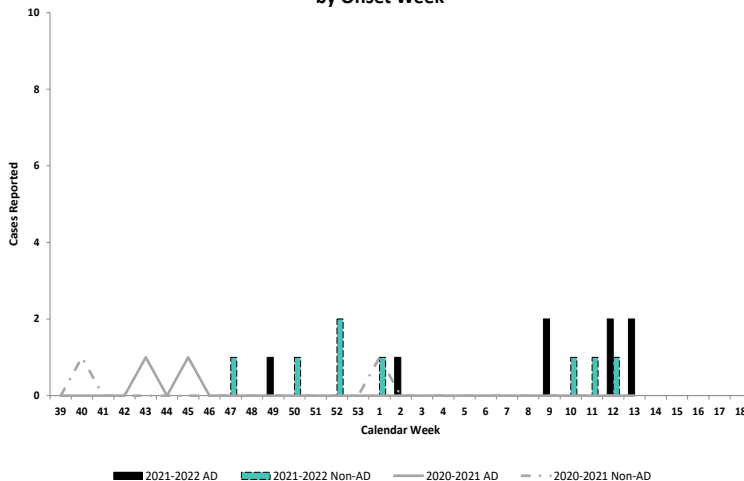
**AD:** Ninety-nine positive respiratory specimens were collected from active-duty (AD) service members (SMs) during week 13; 72.7% (n=72) of the positive specimens were collected from SMs 18-29 years of age.

**Non-AD:** Ninety-nine positive respiratory specimens were collected from non-AD individuals during week 13; 66.7% (n=66) of the positive specimens were collected from individuals under 18 years of age.

*The age and beneficiary status of some cases were not available. Therefore, all calculations involving these variables were conducted using only available data. Differences in total results, and age- and beneficiary status-specific results may be noted throughout the report.*

## INFLUENZA-ASSOCIATED HOSPITALIZATIONS

Army Influenza-Associated Hospitalizations Reported in DRSi by Onset Week



Two influenza-associated hospitalizations with an onset date in week 13 were reported to the Disease Reporting System internet (DRSi). Both of the hospitalized individuals were AD Soldiers. The season total thus far is sixteen hospitalizations. During the 2020-2021 season, no hospitalizations were reported in week 13 (with four hospitalizations reported from the start of the season through week 13).

*The DRSi does not capture cases older than 65 years old for influenza-associated hospitalizations.*

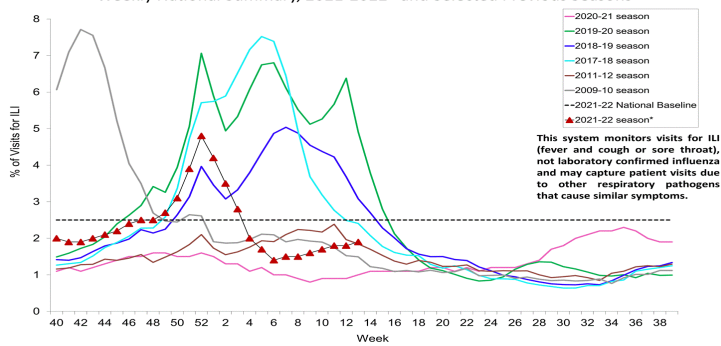
Data are preliminary and subject to change.

Questions?  
Email [APHC DEP](mailto:APHC_DEP)

## ILI ACTIVITY - UNITED STATES

## ILI ACTIVITY - ARMY

Percentage of Outpatient Visits for Respiratory Illness Reported by The U.S. Outpatient Influenza-like Illness Surveillance Network (ILINet), Weekly National Summary, 2021-2022\* and Selected Previous Seasons

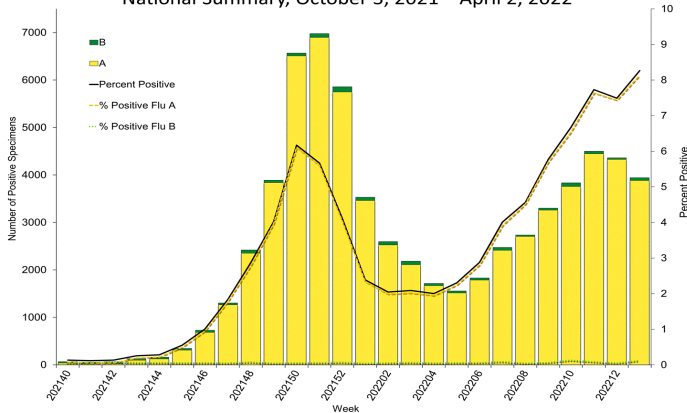


**Data Unavailable**

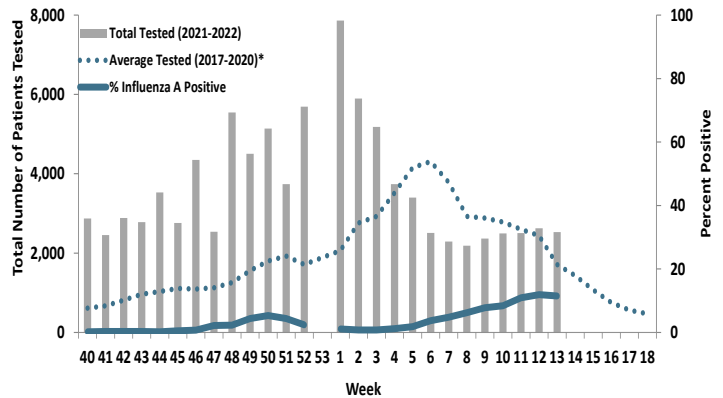
Nationwide in week 13, incident ILI activity was 1.9%; this is below the national baseline of 2.5%. At the time of publishing, incident ILI activity data for the Army population were unavailable.

## LABORATORY RESPIRATORY SPECIMEN TESTING

Influenza Positive Tests Reported to CDC by U.S. Clinical Laboratories, National Summary, October 3, 2021 – April 2, 2022



Proportion of Positive Influenza A Specimens for U.S. Army 2021-2022



Nationwide during week 13, a total of 47,705 specimens were tested for influenza by select clinical laboratories and submitted to the CDC; 3,942 (8.3%) were positive. Influenza A accounted for 98.5% (n=3,883) of the total positive specimens. In the Army population, 292 (11.5%) of the 2,531 specimens tested for influenza A were positive in week 13.

Data from the 2020-2021 influenza season are not included in the Army's average tested calculation due to the unusually low incidence of influenza.

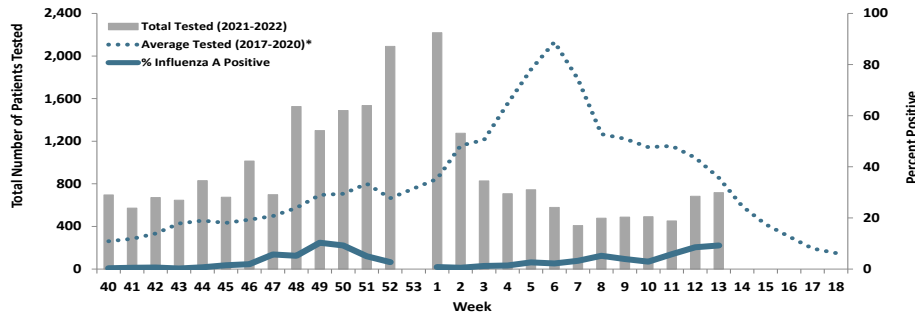
		Week 10	Week 11	Week 12	Week 13	Season Total
Army MTF Laboratory Results, 2021-22	Adenovirus	7	13	9	11	310
	Enterovirus	6	5	3	2	283
	Influenza A	219	274	313	292	2,949
	Influenza B	6	4	10	9	199
	Parainfluenza	6	9	8	12	290
	RSV	11	5	9	12	1,250
	Negative	6,098	5,823	6,232	6,125	227,231
	<b>Total</b>	<b>6,353</b>	<b>6,133</b>	<b>6,584</b>	<b>6,463</b>	<b>232,512</b>

Of the 6,463 test results for respiratory illnesses during week 13, 5.2% (n=338) were positive for any type of respiratory illness. Influenza A accounted for 86.4% (n=292), parainfluenza and respiratory syncytial each accounted for 3.6% (n=12), adenovirus accounted for 3.3% (n=11), influenza B accounted for 2.7% (n=9), and enterovirus accounted for 0.6% (n=2) of the positive results.

**Locations providing week 13 laboratory data as of 6 April 2022:** Carlisle Barracks, Ft. Belvoir, Ft. Benning, Ft. Bliss, Ft. Bragg, Ft. Campbell, Ft. Carson, Ft. Drum, Ft. Eustis, Ft. Gordon, Ft. Hood, Ft. Huachuca, Ft. Jackson, Ft. Knox, Ft. Leavenworth, Ft. Lee, Ft. Lewis, Ft. Meade, Ft. Myer, Ft. Polk, Ft. Riley, Ft. Rucker, Ft. Sam Houston, Ft. Sill, Ft. Stewart, Ft. Wainwright, Korea, Landstuhl Regional Medical Center, Redstone Arsenal, the U.S. Military Academy, and Walter Reed National Military Medical Center.

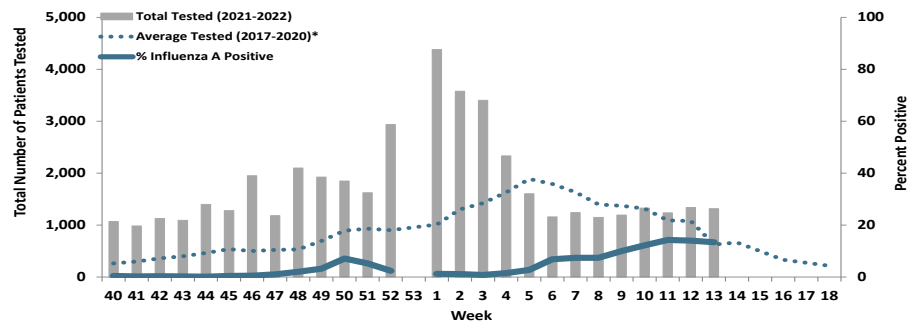
**Proportion of Influenza A Positive Specimens by Week and Region, Army Medical Laboratories, 2021-2022 as Compared to 2017-2020\***

**Regional Health Command - Atlantic (RHC-A)**



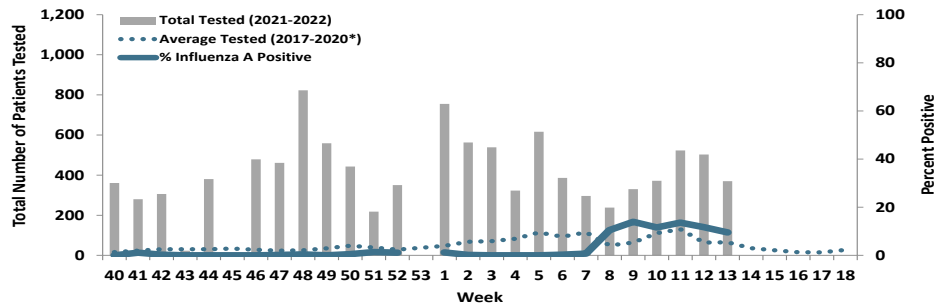
Week 13			
Age Group	AD	Non-AD	Season Total
< 18	0	14	266
18-29	30	6	410
30-39	7	2	98
40-49	2	0	34
50-59	0	0	24
60+	0	3	26
<b>Total</b>	<b>39</b>	<b>25</b>	<b>858</b>

**Regional Health Command - Central (RHC-C)**



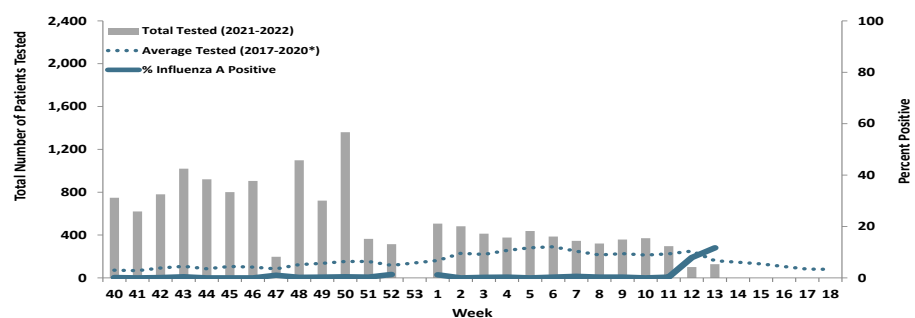
Week 13			
Age Group	AD	Non-AD	Season Total
< 18	0	17	341
18-29	17	5	380
30-39	7	3	141
40-49	2	3	49
50-59	0	2	29
60+	0	4	51
<b>Total</b>	<b>26</b>	<b>34</b>	<b>991</b>

**Regional Health Command - Europe (RHC-E)**



Week 13			
Age Group	AD	Non-AD	Season Total
< 18	0	8	42
18-29	19	1	213
30-39	3	1	39
40-49	1	1	9
50-59	1	0	4
60+	0	0	2
<b>Total</b>	<b>24</b>	<b>11</b>	<b>309</b>

**Regional Health Command - Pacific (RHC-P)**



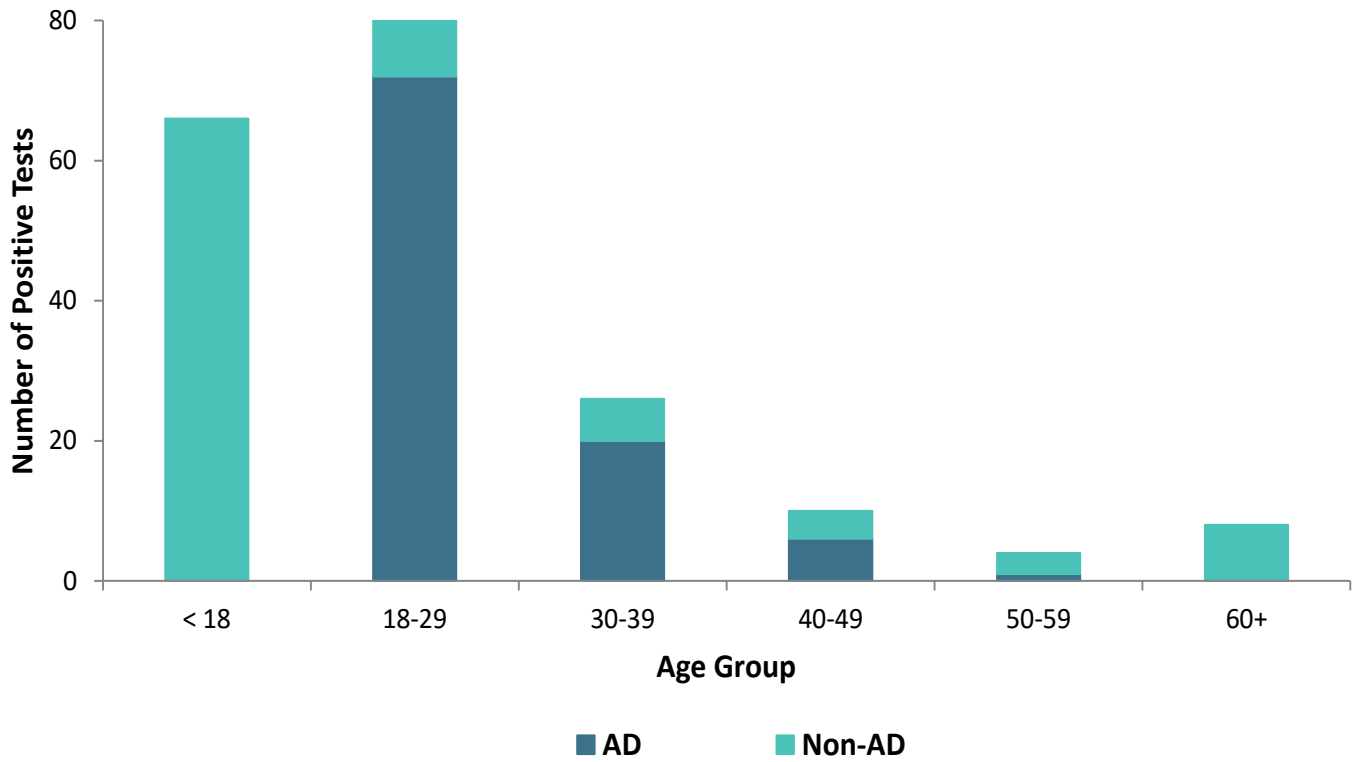
Week 13			
Age Group	AD	Non-AD	Season Total
< 18	0	0	1
18-29	0	0	9
30-39	0	0	0
40-49	0	0	1
50-59	0	0	1
60+	0	0	0
<b>Total</b>	<b>0</b>	<b>0</b>	<b>12</b>

\*2017/2018 influenza season - 2019/2020 influenza season. Data from the 2020-2021 influenza season are not

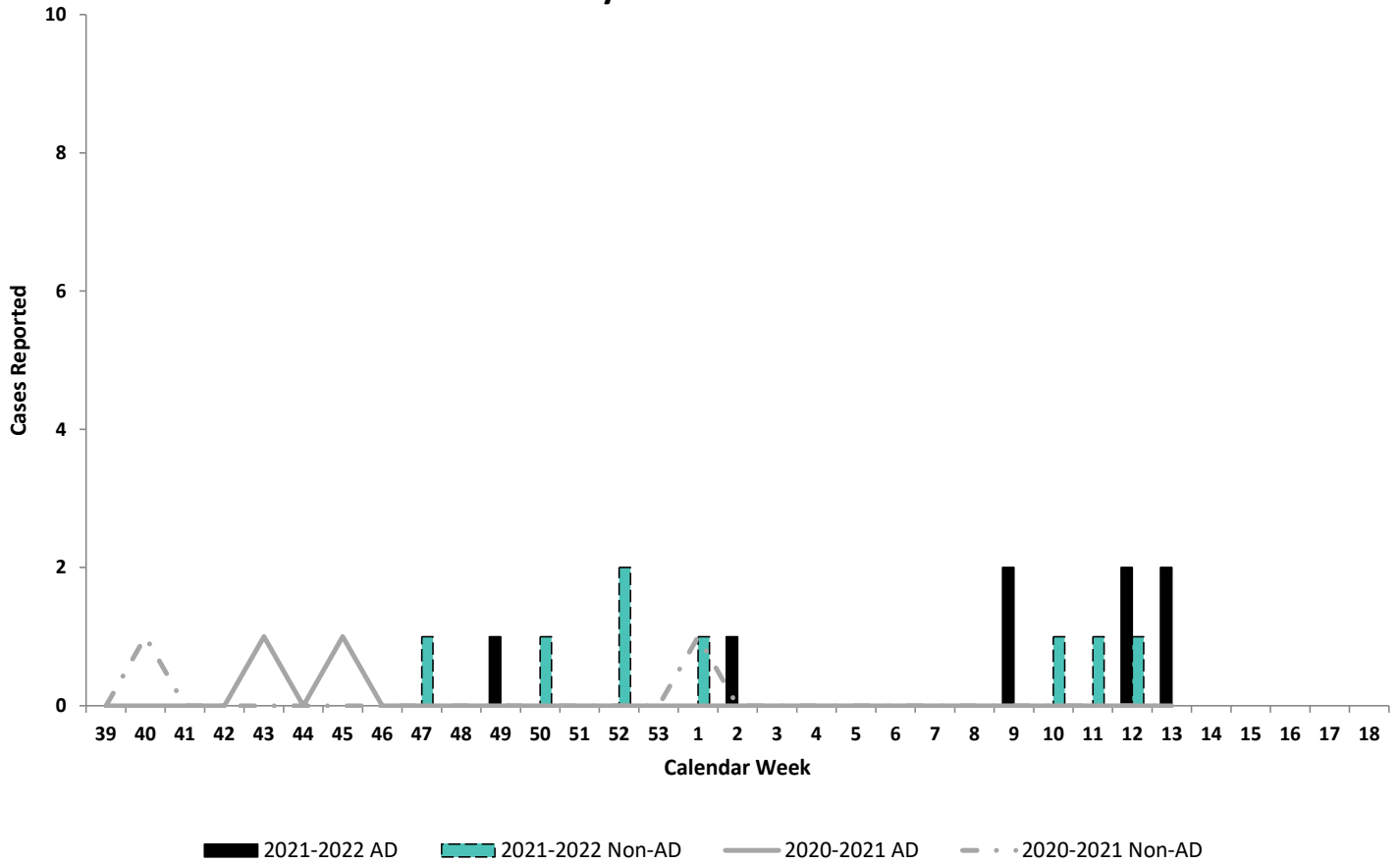
**Number of Positive Influenza A Specimens by Region and Duty Status**

Region	Week 10		Week 11		Week 12		Week 13	
	AD	Non-AD	AD	Non-AD	AD	Non-AD	AD	Non-AD
RHC-A	5	9	13	13	28	26	39	25
RHC-C	31	63	36	36	25	28	26	34
RHC-E	39	4	64	7	38	21	24	11
RHC-P	0	0	0	0	1	0	0	0

**Positive Respiratory Specimen Results from Army MTFs by Age Group and Beneficiary Status, Week 13**



**Army Influenza-Associated Hospitalizations Reported in DRSi by Onset Week**

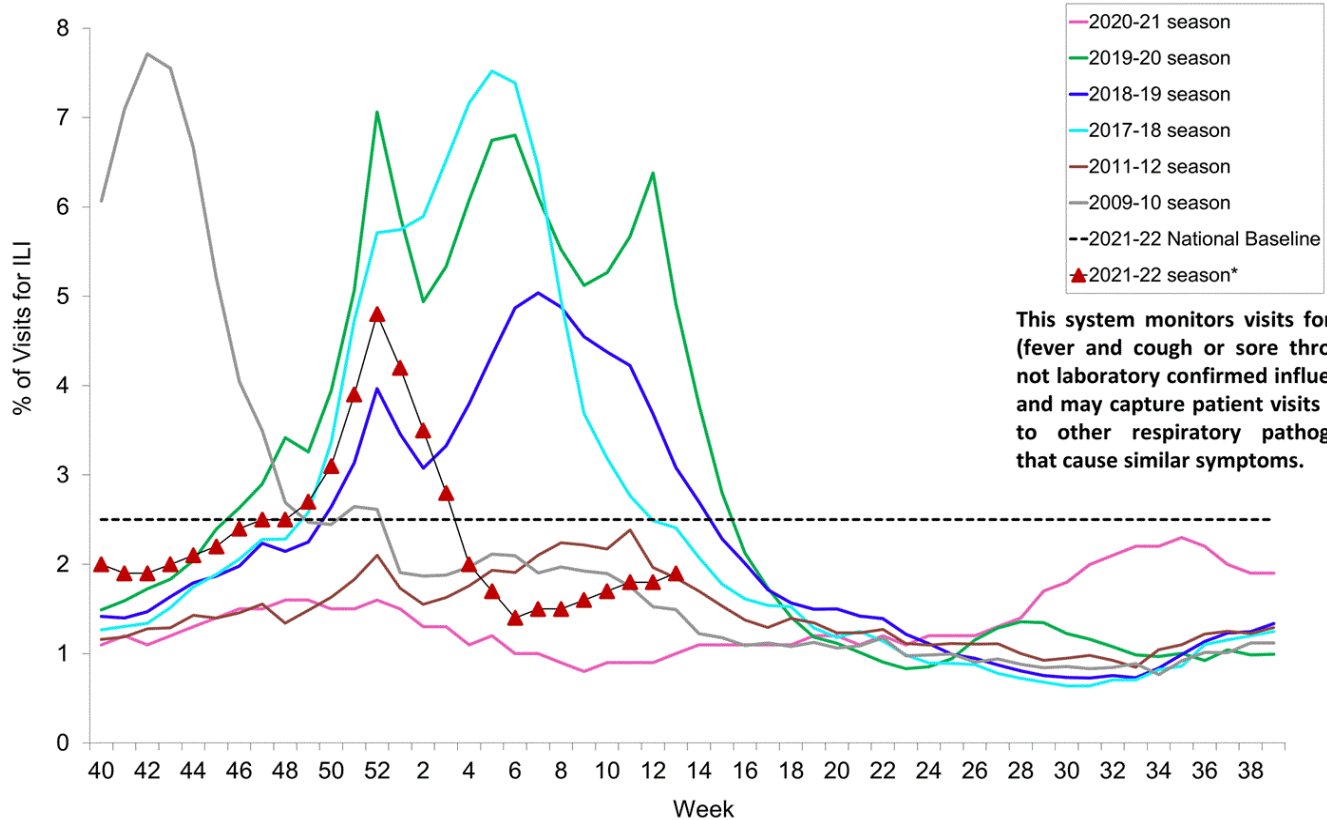


U.S. Army Public Health Center

# Army Influenza Activity Report

Week ending 02 April 2022 (Week 13)

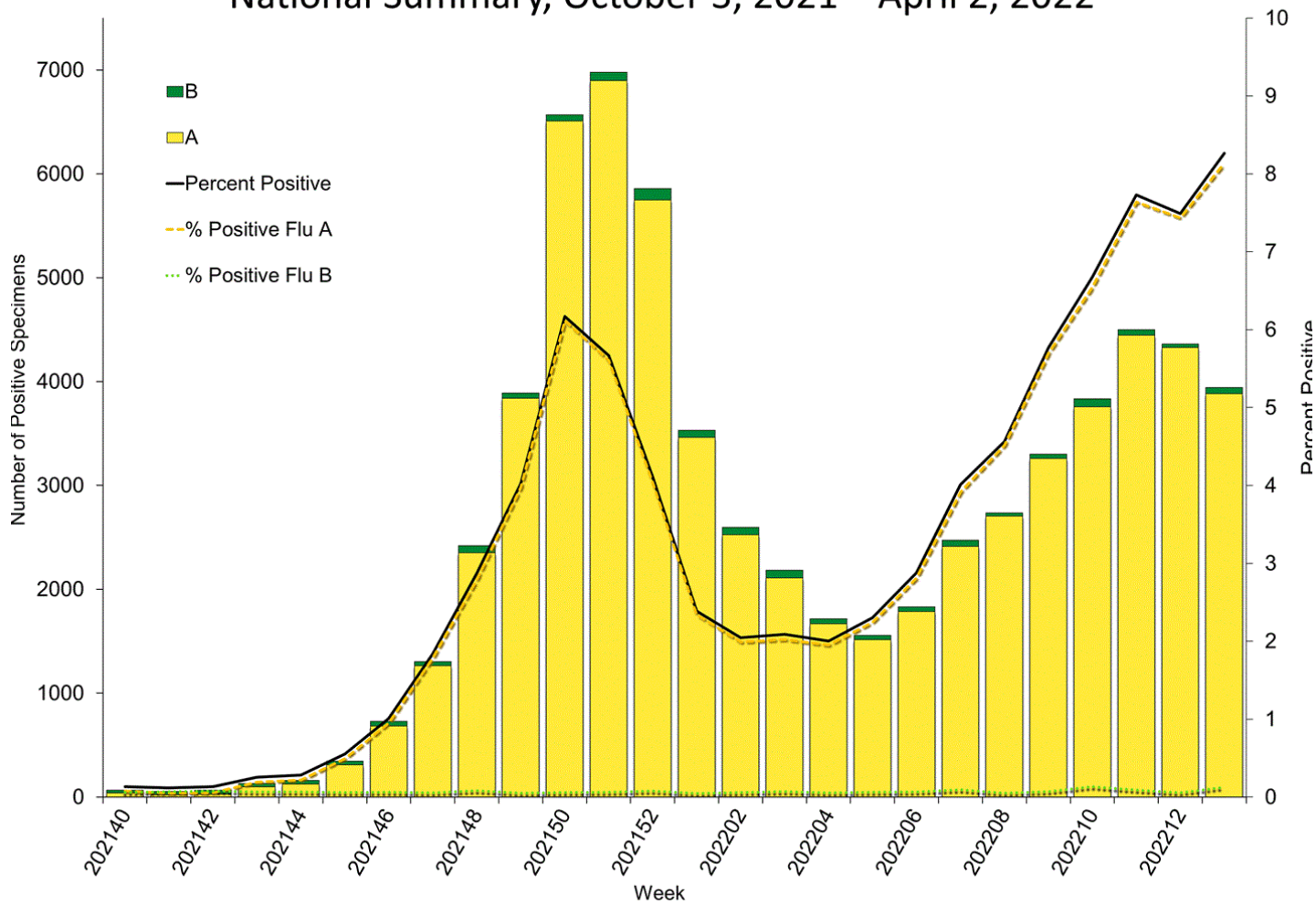
The U.S. Outpatient Influenza-like Illness Surveillance Network (ILINet),  
Weekly National Summary, 2021-2022\* and Selected Previous Seasons



Source: Centers for Disease Control and Prevention (CDC)



### Influenza Positive Tests Reported to CDC by U.S. Clinical Laboratories, National Summary, October 3, 2021 – April 2, 2022

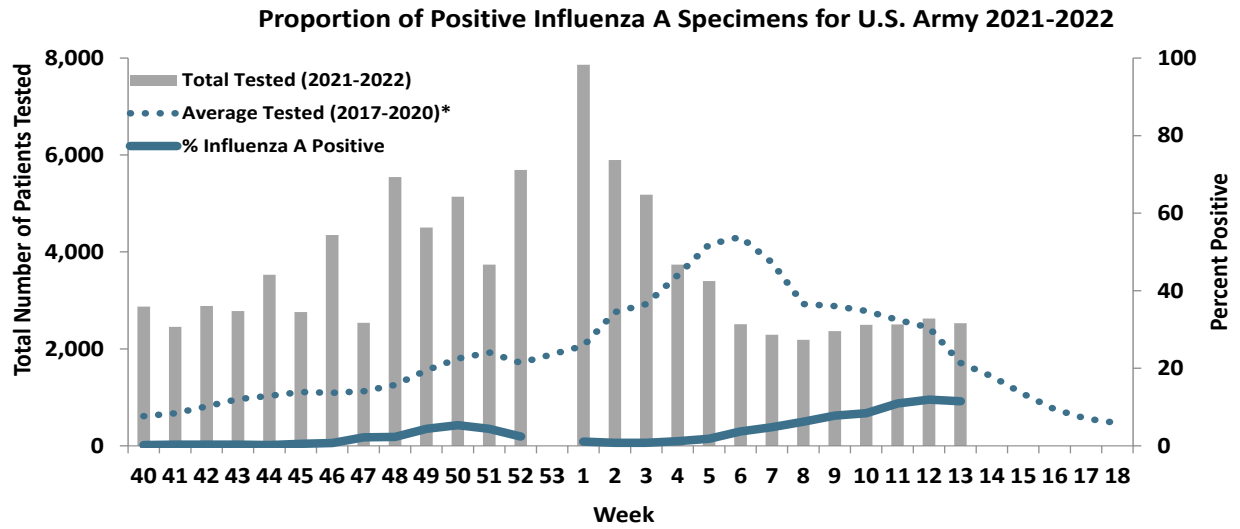


Source: Centers for Disease Control and Prevention (CDC)

U.S. Army Public Health Center

# Army Influenza Activity Report

Week ending 02 April 2022 (Week 13)



\*2017/2018 influenza season - 2019/2020 influenza season. Data from the 2020-2021 influenza season are not included in the average tested calculation due to the unusually low incidence of influenza.